

**4776 SQ FT**

Apartment: 3061 sq ft  
Deck & Pool: 1264 sq ft  
Garage: 451 sq ft

**“NO TAN-LINES” PRIVACY**  
expansive, private patio with an  
56 ft. Infinity-edge pool.

**INDOOR - OUTDOOR LIVING**  
Floor-to-ceiling glass windows for  
spectacular ocean views

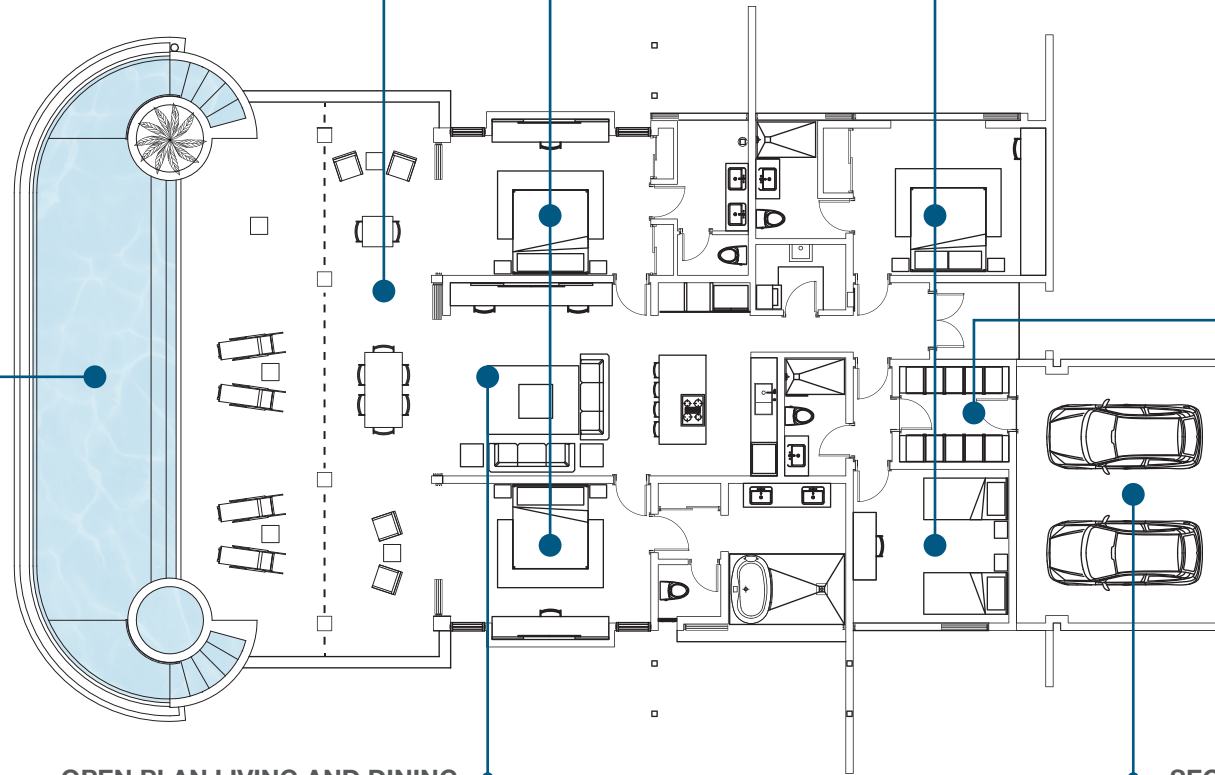
**WAKE UP TO A DREAM**  
Grand master bedrooms  
face the same breathtaking  
views as the living spaces.

**ROOM TO SPARE**  
Second bedroom welcoming in the  
greenery of tropical internal gardens  
with the added convenience of a  
semi en suite / en suite bathroom.

**OPEN PLAN LIVING AND DINING**  
Grand kitchen complete with granite counter tops  
and top-of-the-line appliances.

**OWNERS STORAGE**  
When you are not using your  
residence, enjoy peace of mind  
with conveniently located storage.

**SECURE GARAGE**  
Direct entry to residence.



*The above are artistic impressions intended for visual purposes only. Floor plan areas are approximate and not necessarily to scale. Square footage represents a typical unit.*

**4 BEDROOM BEACH HOUSE  
WITH GARAGE**

**BEACH HOUSES**  
EAST COAST • BARBADOS